

THAILAND COUNTRY REPORT



ASIA PACIFIC
DOWN SYNDROME
FEDERATION

By

Sunsanee Rajchagool, DDS, M.P.H

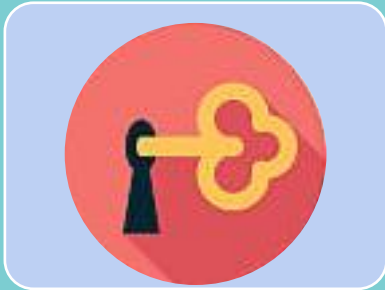
Lalerthip Rajchagool, LL.B., B.L,



Our presentation:



A campaign for social understanding



Related laws and regulations



An example on how these laws work

can't take care of themselves

Can't socialize

Can't control their temper

can't speak fluently

Required caregiver

Can't learn

Our presentation:



A campaign for social understanding



Related laws and regulations



An example on how these laws work



But

Antenatal screening tests was included in benefit package of Thai Universal health coverage, available for free to every pregnant.(2021)

Good counselling ?



Our presentation:



A campaign for social understanding

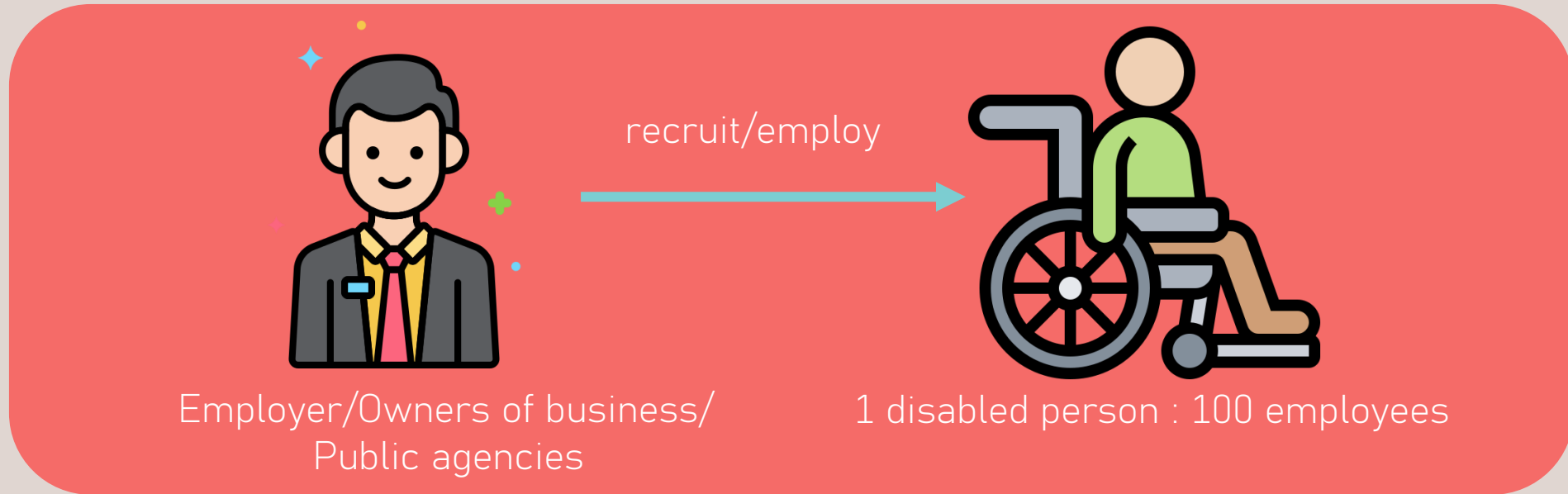


Related laws and regulations



An example on how these laws work

Persons with Disabilities Empowerment Act, B.E. 2550 (2007).



- If not > Employer/Owners of business/Public agencies are obliged to either
 - Contribute to funds
 - Grant concessions to Persons with Disabilities or caregiver of Persons with Disabilities
 - Arrange places for distributing products or services to Persons with Disabilities or caregiver of Persons with Disabilities
 - Hire subcontract employees or hire employment services by special means.
 - Provide apprenticeship or equipment or facilities and sign language interpreter
 - Provide other assistance to Persons with Disabilities or caregiver of Persons with Disabilities

Our presentation:



A campaign for social understanding



Related laws and regulations



An example on how these laws work



*The Healing Family
Foundation
Chiang Mai, Thailand*

A community-based rehabilitation center




<http://www.hffcm.org/en/main.php>

Tel / Fax: +66 53 244393

e mail: scc_cm@yahoo.com

<https://www.facebook.com/healingfamilyfoundation>



ผมชื่อพีทูครับ อายุ 35 ปี
My name is Two, I'm 35 years old

Thank you for your attention

